

Technical characteristics

MODEL	EW25.5-60	EW25.5-90
Performance		
Unladen weight (kg)	4.950	4.950
Maximum load capacity (kg)	2.500	2.500
Lift height (m)	4,8	4,8
Maximum reach (m)	2,6	2,6
Load capacity at max. height (kg)	1.500	1.500
Load capacity at max. reach (kg)	900	900
Height - maximum load capacity (m)	3,4	3,4
Reach at max. load capacity (m)	1,15	1,15
Boom section	2	2

Powertrain

Motor	Electrical	Electrical
Battery (type and V)	Lead-acid - 48V	Lead-acid - 48V
Nominal capacity	960 Ah	960 Ah
Emissions	No emissions	No emissions
Max power (kW/CV)	44/60	66/90
Maximum speed (km/h)	25	25
Traction	2WD	4WD
Autonomy (hours)	8	8
Recharge time at 220 V (hours)	9	9
Recharge voltage	220 V / 400 V	220 V / 400 V
Battery charger	Yes	Yes

Hydraulic system

Hydraulic pump	Load Sensing	Load Sensing
Delivery/pressure (l/min-bar)	42/210	42/210
Hydraulic outlet on top of the boom	Yes	Yes
Rear hydraulic outlets	Optional	Optional

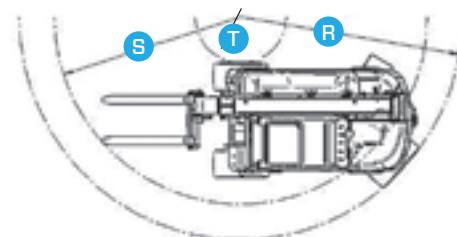
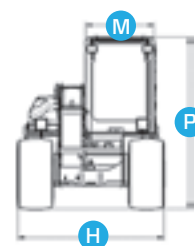
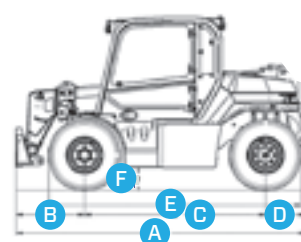
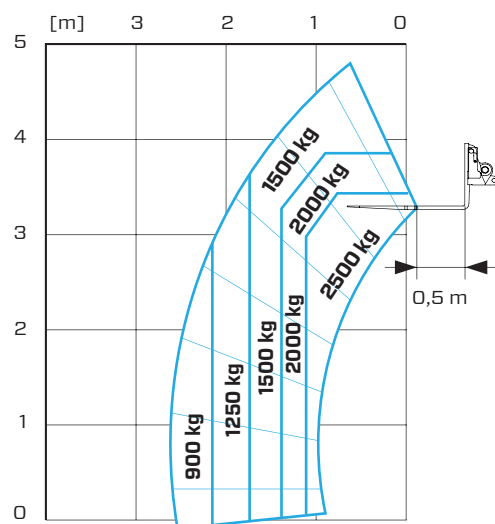
Cab

Closed cab	Optional	Optional
FOPS LEV I Cab - ROPS	Yes	Yes
Controls	Electronic joystick control	Electronic joystick control
Reverse shuttle	Dual reverse	Dual reverse

Configuration

Battery fast replacement	Yes	Yes
Tac-lock	Yes	Yes
Work lights on cab	Yes	Yes
Two floating forks	Yes	Yes
Boom suspension	Optional	Optional
Two steering wheels	Rear	Rear
Front standard tyres	10,0/75-15,3	10,0/75-15,3
Rear standard tyres	10,0/75-15,3	10,0/75-15,3
Optional tyres	7,5R15	7,5R15 31x15,5-15
Brakes	Front wet	Front wet
Automatic parking brake	Yes	Yes
Pre-arrangement for aerial work platform	Optional	Optional
Tractor type approval	Optional	Optional

EW25.5



DIMENSIONS	EW25.5-60	EW25.5-90
A (mm)	3.320	3.320
B (mm)	765	765
C (mm)	2.100	2.100
D (mm)	455	455
E (mm)	2.940	2.940
F (mm)	230	230
H (mm)	1.540	1.540
M (mm)	770	770
P (mm)	1.975	1.975
R (mm)	2.850	3.250
S (mm)	2.230	2.700
T (mm)	0	670